

LYNGDORF AUDIO TDAI-3400

# QUICK GUIDE

## TABLE OF CONTENTS

Inventory .....	3
Front Panel.....	4
Rear Panel .....	5
Remote Control .....	6
Quick Set-up guide.....	7
Connect speakers, sources and power.....	7
Connect to Wi-Fi using iPhone or iPad .....	7
Connect to Wi-Fi using Android phone or tablet .....	7
Connect to Wi-Fi manually .....	7
Finish the setup with Lyngdorf Audio app or web browser.....	7
Menu Structure Overview TDAI-3400 .....	8
Technical assistance .....	9

## Inventory

Check the list below to ensure that all necessary product components have been delivered. Report all discrepancies to your Lyngdorf Audio representative immediately.

- Owner's manual
- Power cord
- Remote control
- Microphone
- Microphone stand
- Microphone cable
- Microphone adaptor (XLR to 3.5mm mini-jack)

## Front Panel



On the front of the TDAI-3400, you will find the display, controls and a few connectors:

Left to Right:

- Display
- Dial for changing source. Long push for entering the menu system
- Wi-Fi and Bluetooth antennas
- 1 x USB A media input and software update
- 1 x Microphone input for RoomPerfect™ calibration
- 1 x Headphone output
- Dial for Volume Control
- Stand-By switch

## Rear Panel



On the back of the TDAI-3400, you will find a range of inputs and output connectors:

Top Row / Left to Right:







- Optional Module with 1 x phono (MM), 2 x single ended, and 1 x balanced analog audio inputs
- Optional Module with 1 x TV HDMI output and 3 HDMI inputs, all 4K /HDR compatible
- Speaker Outputs

Low Row / Left to Right

- 2 x single ended analog audio inputs
- 1 x single ended analog audio output
- 1 x balanced analog audio output
- 1 x USB B streaming audio input
- 1 x AES/EBU digital audio input
- 2 x coaxial digital audio inputs
- 3 x optical digital audio inputs
- 1 x coaxial digital audio output
- 1 x USB A connector for music file playback, software updating, etc.
- 1 x SD card slot for storing backup data /SD Card is included
- 1 x RJ45 LAN connector for connection to local network
- 1 x RS-232 connector for serial control of the unit
- 1 x trigger input and 1 x trigger output
- 1 x Main voltage connector with input voltage selector and mains switch

## Remote Control

The TDAI-3400 comes with a dedicated remote control, which can operate both with radio frequencies (Bluetooth LFE) and infrared control (IR).

Display	Changes the read-out on the front display.
	Turn the TDAI-3400 on and into standby.
Info	Reveals information on input signal.
Trim	Adjusts Balance and Bass / Treble levels.
Up/Down	Move up and down in menus. Browse available settings in a menu.
Left/Right	Toggles between the available RoomPerfect™ filters. Move left and right in menus. Toggle between neutral and the available voicings.
Select	Select a menu and store a selected setting.
Back/Exit	Return to the previous menu.
Menu	Access the user menu.
 +/-	Turn volume up and down.
	Mute and restore the sound send to the headphones
	Mute and restore the sound in the speakers.
SRC +/-	Toggle between active sources.
	Play/pause the currently playing track in the media player.
	Skip in the current playlist in the media player.



## Quick Set-up guide

### Connect speakers, sources and power

1. Connect the speakers to the Speaker Output connectors.
2. Connect all external equipment, audio and video, mains power, etc. to the TDAI-3400.
3. If possible, connect the TDAI-3400 to your local network with an ethernet cable.
4. Switch on the mains switch on the back of the TDAI-3400.  
The TDAI-3400 will boot the internal computer and go into Stand-By.
5. Switch on the TDAI-3400.  
The TDAI-3400 will initially want to connect to your local network.  
If connected by network cable (LAN) the TDAI-3400 will automatically connect and display the IP network reference.

### Connect to Wi-Fi using iPhone or iPad

If no wired network is attached, the TDAI-3400 will want to connect via Wi-Fi – referring to “Apple Wi-Fi Accessory Configuration”.

1. Open the Wi-Fi settings on your iPhone/iPad – and you will find the TDAI-3400 under “Setup New Airplay Speaker”.
2. Change the device name of your TDAI-3400, press Next, and the TDAI-3400 will copy the Wi-Fi settings from your phone

### Connect to Wi-Fi using Android phone or tablet

The TDAI-3400 will establish a soft access point. Type 192.168.110.42 in your browser to access the manual Wi-Fi setup.

### Connect to Wi-Fi manually

Without iPhone/iPad you can manually enter all data or use the WPS function to pair the TDAI-3400 with your Wi-Fi router. (Select WPS and go and press the WPS button on your router)

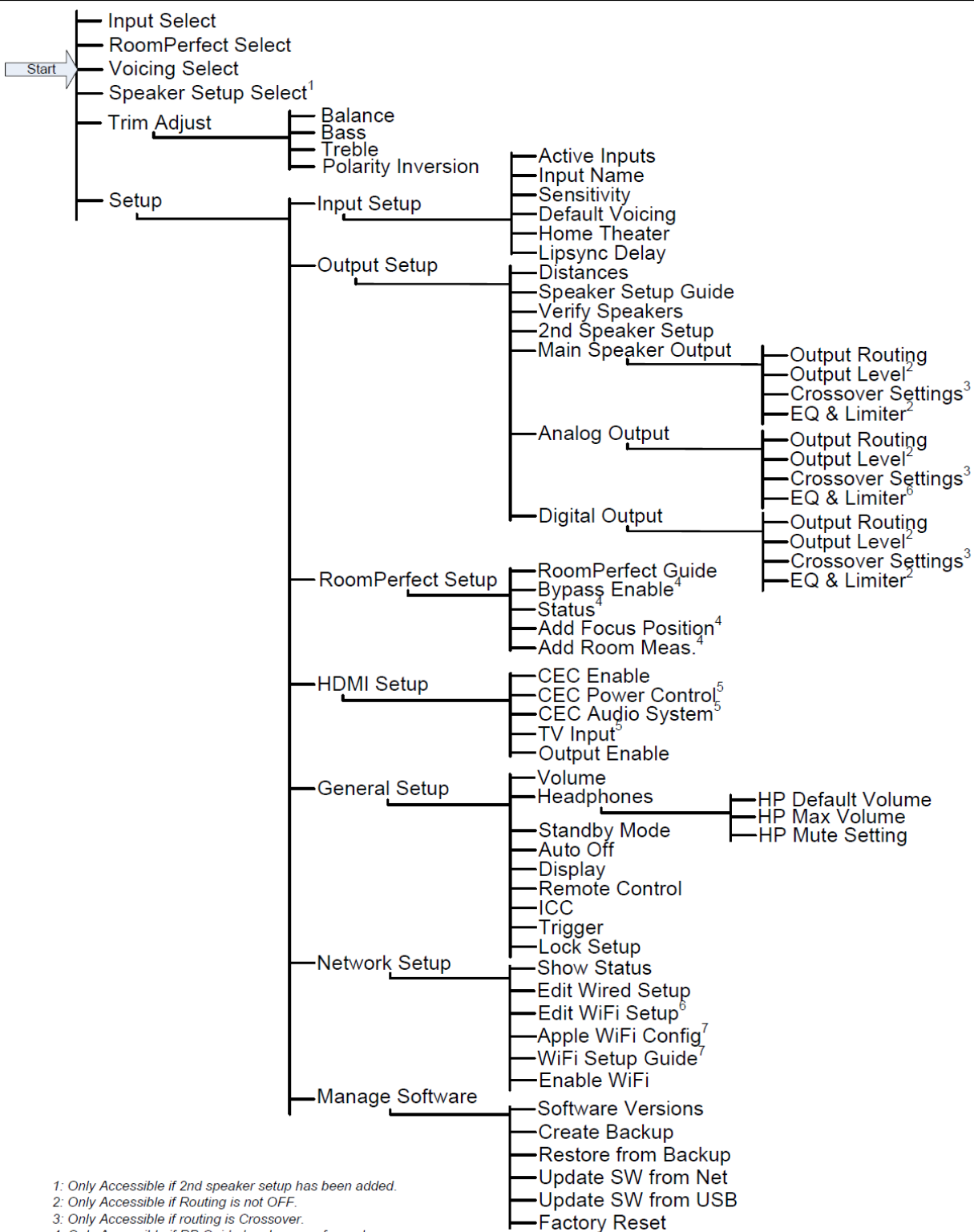
### Finish the setup with Lyngdorf Audio app or web browser

You can now continue with the Speaker Setup, Input Setup, Output Setup, RoomPerfect™ in the Lyngdorf Audio app on your phone or tablet, or via the web interface by typing the following in a browser:

**tdai3400.local.**

All setup options are further described in the TDAI-3400 Owner's Manual. If you do not want to continue doing setup or calibration, then exit the menu by a long push on the menu button. The TDAI-3400 will now have a basic stereo setup, and you can play music.

# Menu Structure Overview TDAI-3400



1: Only Accessible if 2nd speaker setup has been added.  
 2: Only Accessible if Routing is not OFF.  
 3: Only Accessible if routing is Crossover.  
 4: Only Accessible if RP Guide has been performed.  
 5: Only accessible if CEC enabled.  
 6: Only accessible if WIFI enabled and connected.  
 7: Only accessible if WIFI enabled.



## Technical assistance

For the latest version of the manual, please check the Lyngdorf Audio website: [www.steinwaylyngdorf.com](http://www.steinwaylyngdorf.com).

If you have any problems with or questions regarding your Lyngdorf Audio product:

- Please contact your nearest Lyngdorf Audio representative
- Visit the Download section on the Lyngdorf Audio website
- Read the FAQ in the Support section on the Lyngdorf Audio website
- Send us a question in the Support section on the Lyngdorf Audio website

SL Audio A/S

Ulvevej 28, 7800 Skive, Denmark

Web: [www.steinwaylyngdorf.com](http://www.steinwaylyngdorf.com)